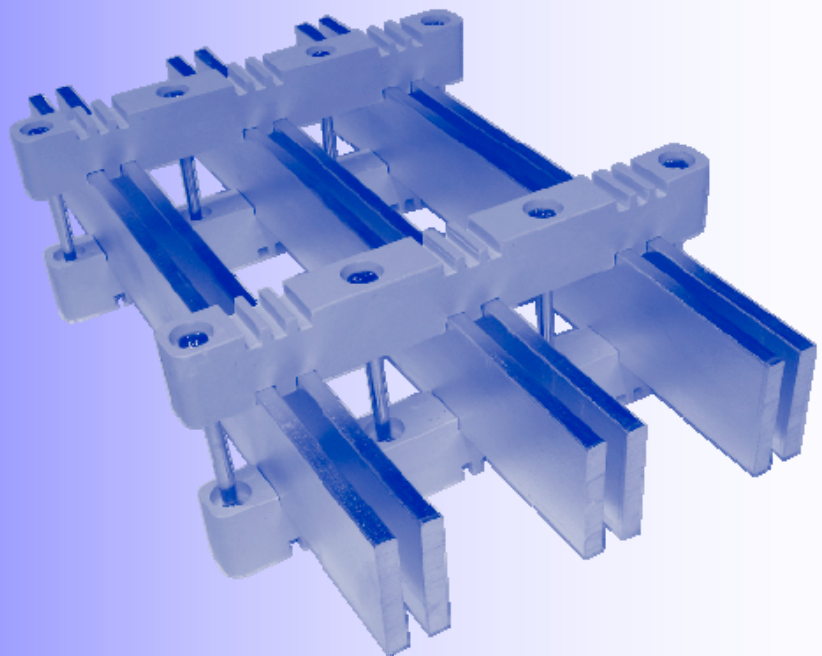


# Busbar Supports Type BSD

**KENTAN**



**Low Voltage Switchboard Equipment**  
Publication BSD 2009

# Technical

---

## Use

Type BSD BUSBAR SUPPORTS suit most conventionally arranged busbar systems. These supports are designed to accommodate either 6.35mm and 10mm wide bars.

## Material Details

The supports are compression moulded from fibreglass reinforced unsaturated polyester dough moulding compound. Material is halogen free. Colour beige.

	Properties	Test Method	Unit	
Mechanical	Tensile strength	BS2782/ISO179	MPa	30
	Impact Strength (90°)		Kj /m <sup>2</sup>	26
	Flexural Strength		MPa	90
Electrical	Loss Tangent (LMHz)			Tan 0.013
	Comp. Tracking Index	IEC 60112	V	CTI 600
	Arc Resistance	ASTM D495-73	SEC	195
	Insulation Resistance	IEC 60167	ohm	12.3
Thermal	Working temperature		°C	160
	Temp. of Deflection		°C	>200
	Flammability Rating	UL Standard 94		VO / 5VA
Moisture Absorption	Tropicalised	BS2782	Mg	<12

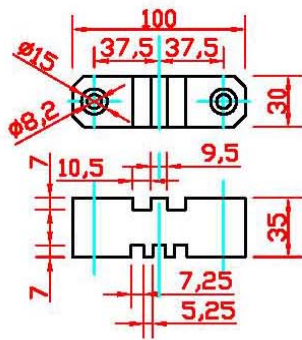
## Spacings

Cat No	Fault Current		Bar Size (mm)	Support Dist. (mm)	Test Report
	kA rms	kA peak			
BSD1/210/306	50	105	2-75x10	400	1119/1
BSD1/210/306	50	105	3-75x6	400	1119/1
BSD4/110/106	35	73.5	1-75x6	300	1119/3
BSD4/210/306	63	138.6	2-75x10	400	1119/2

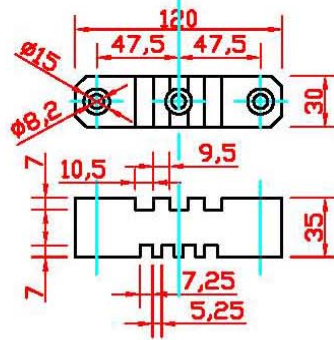
- 1/. Rated operational Voltage
- 2/. Rated insulation Voltage
- 3/. Rated frequency
- 4/. Duration of Fault Current

Ue 415V  
Ui 1000V  
50-60 Hz  
1 second

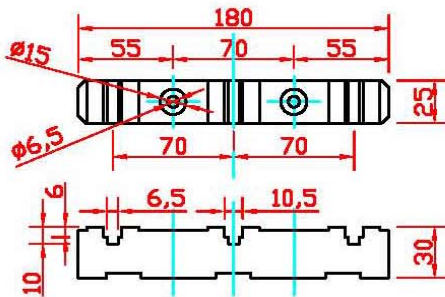
# Dimensions



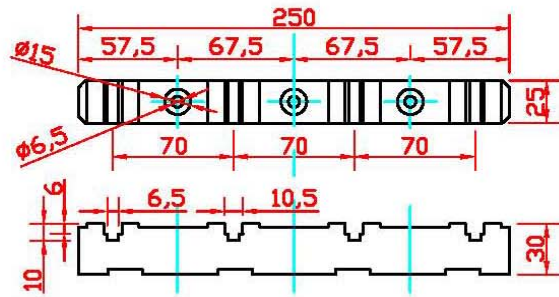
**BSD1/210/306**



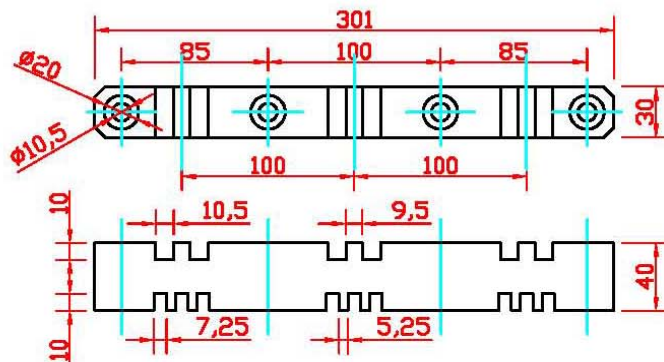
**BSD1/310/406**



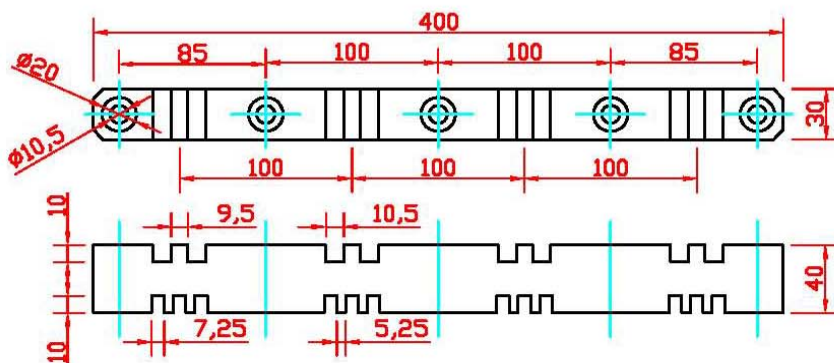
**BSD3/110/106**



**BSD4/110/106**



**BSD3/210/306**



**BSD4/210/306**

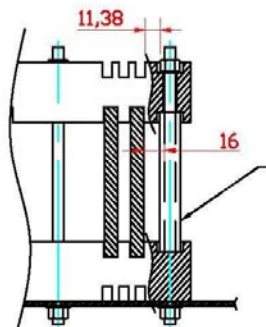
# Installation

Cat No	Phases	Busbar (Side 1)	Busbar (Side 2)	Fixing Bolt	Torque (Nm)
BSD1/210/306	1	2x10mm	3x6mm	M8	10
BSD1/310/406	1	3x10mm	4x6mm	M8	10
BSD3/110/106	3	1x10mm	1x6mm	M6	8
BSD4/110/106	4	1x10mm	1x6mm	M6	8
BSD3/210/306	3	2x10mm	3x6mm	M8	10
BSD4/210/306	4	2x10mm	3x6mm	M8	10

## SUPPORTS TYPE BSD 3/210/306 and BSD4/210/306

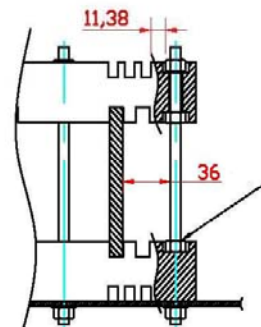
It is essential that these BSD BUSBAR SUPPORTS are not overstressed by tightening the connecting bolts or rods beyond the recommended limit. This is 10N/m for M8 bolts and applies in particular to the outer fixings, and especially where the outside slot is not utilised.

To prevent overstressing, a spacer tube or nut should be used as illustrated below. The spacer tube also increases the creepage distance to earth.



Spacer Tube

16mmØ medium duty electrical conduit.  
Length is bar height less 6mm.



M8 Hex Nut

Bottom nut optional

## KENTAN ENGINEERING

A.B.N. 21 009 217 654

Unit 3, 8 Carole Road  
MADDINGTON Western Australia 6109

P.O. Box 284  
MADDINGTON Western Australia 6989

International Telephone: 61 8 9493 5255

National Telephone: (08) 9493 5255

Facsimile: (08) 9493 5242

Email: [sales@kentan.com.au](mailto:sales@kentan.com.au)

Internet: [www.kentan.com.au](http://www.kentan.com.au)



KENTAN ENGINEERING IS A QUALITY ASSURED COMPANY

---